

# Clean Start™

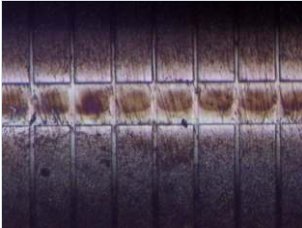
## PRINthead CLEANING SYSTEM

without CLEAN START



Print Quality is compromised when you neglect your print head.

Printhead microscope close-up:



Over time, the residue becomes permanent.



*removes debris before it builds up!*

### WHY IS IT RECOMMENDED TO USE CLEAN START?

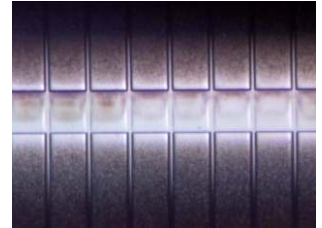
Printhead build up is a normal occurrence in thermal transfer printing. Eventually the residue becomes permanent and will create a barrier between print head and label. Clean Start is the answer. It is positioned between the leader and the ribbon as a constant reminder to clean the print head every time a new ribbon is started. It is so easy and it helps to extend the life of the print head.

with CLEAN START



Print Quality when you use Clean Start before every ribbon.

Printhead microscope close-up:



Printhead regularly cleaned with CLEAN START.

*for more information contact your distributor*

## save your printhead

### 5 EASY STEPS TO CLEAN YOUR PRINthead WITH CLEAN START



**Step 1**  
Rewind tag or label stock and install replacement ribbon featuring the Clean Start printhead cleaner on spindle.



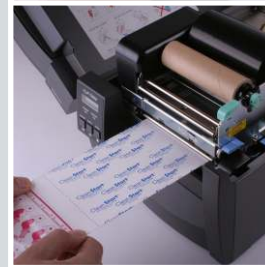
**Step 2**  
Feed the leader under the printhead and stop when approximately 2cm of Clean Start is pulled through (marked on Clean Start with a dotted line).



**Step 3**  
Lock the printhead.



**Step 4**  
Firmly grip Clean Start film on both edges. Gently pull Clean Start film using smooth, steady force. Stop when the next dotted line appears under the printhead. Printhead cleaning is now complete.



**Step 5**  
Unlock the printhead. Continue ribbon and stock installation as usual.

use

# Clean Start

